

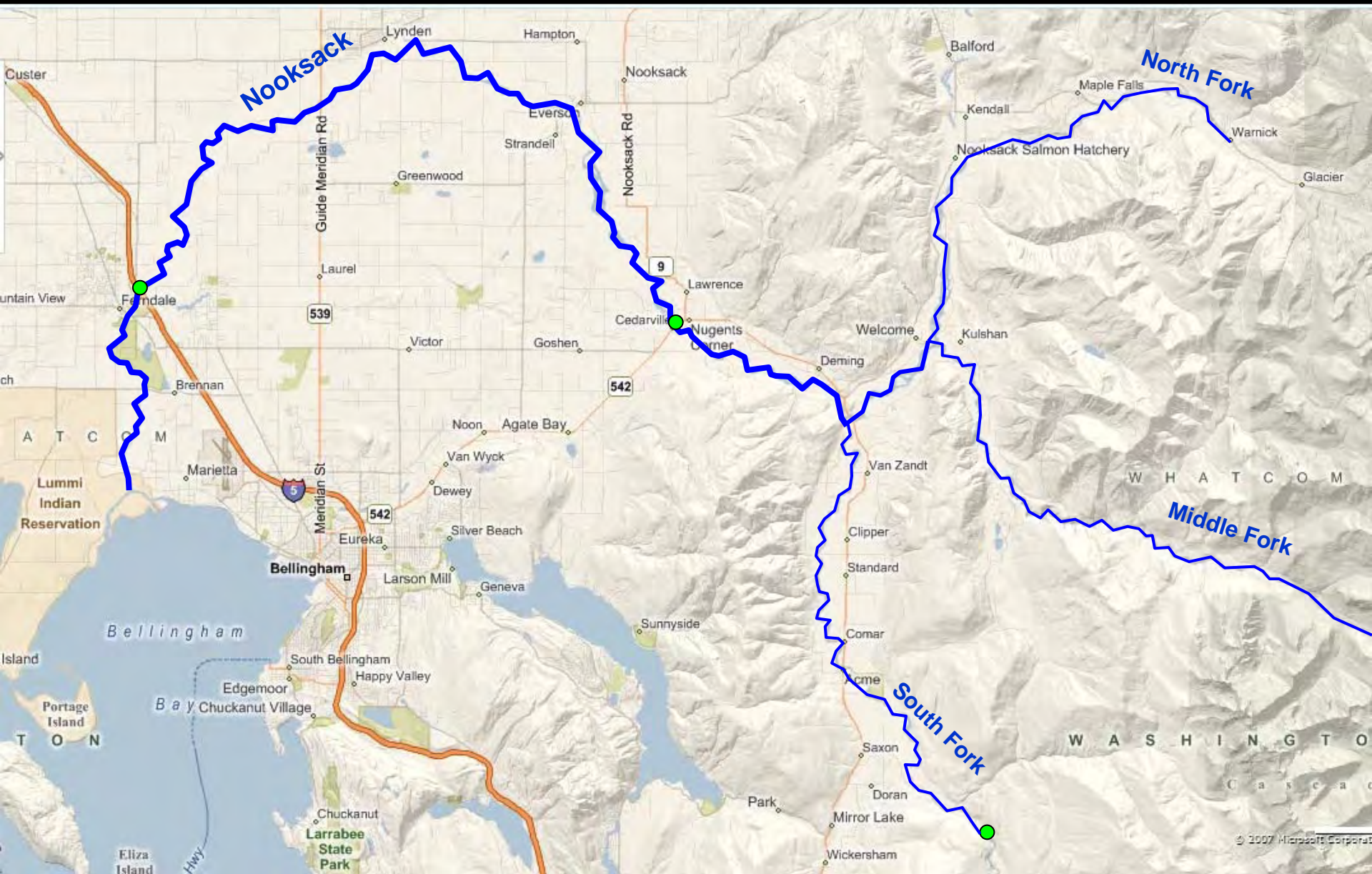
#	Type	Name
1	A	Nooksack
2	A	Skagit
3	A	Stillaguamish / Snohomish
4	B	Sammamish / Cedar / Green
5	B	Puyallup / Nisqually / Deschutes
6	B	Chehalis / Hoquiam
7	B	Olympic Peninsula

#	Type	Name	#	Type	Name
1	A	Upper Clark Fork	6	A	Coeur D'Alene & Spokane
2	B	Flathead	7	C	Colville
3	C	Pend Oreille & Lower Clark Fork	8	A	Okanogan & Methow
4	C	Kootenai	9	C	Wenatchee & Central Washington
5	B	St. Joe	10	A	Yakima & Naches





Nooksack

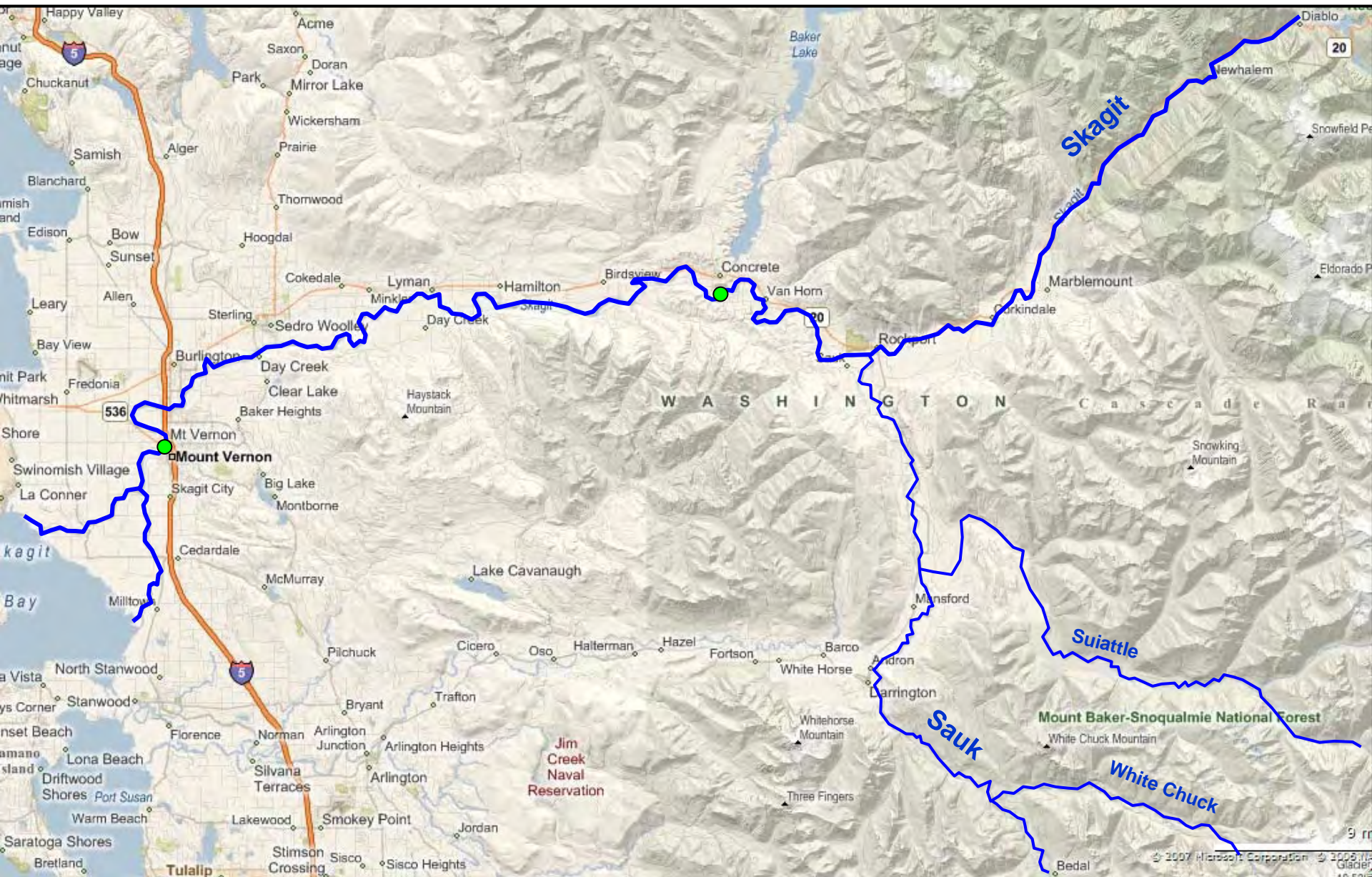




as of 07JAN09

US Army Corps
Of Engineers
Seattle District

Skagit

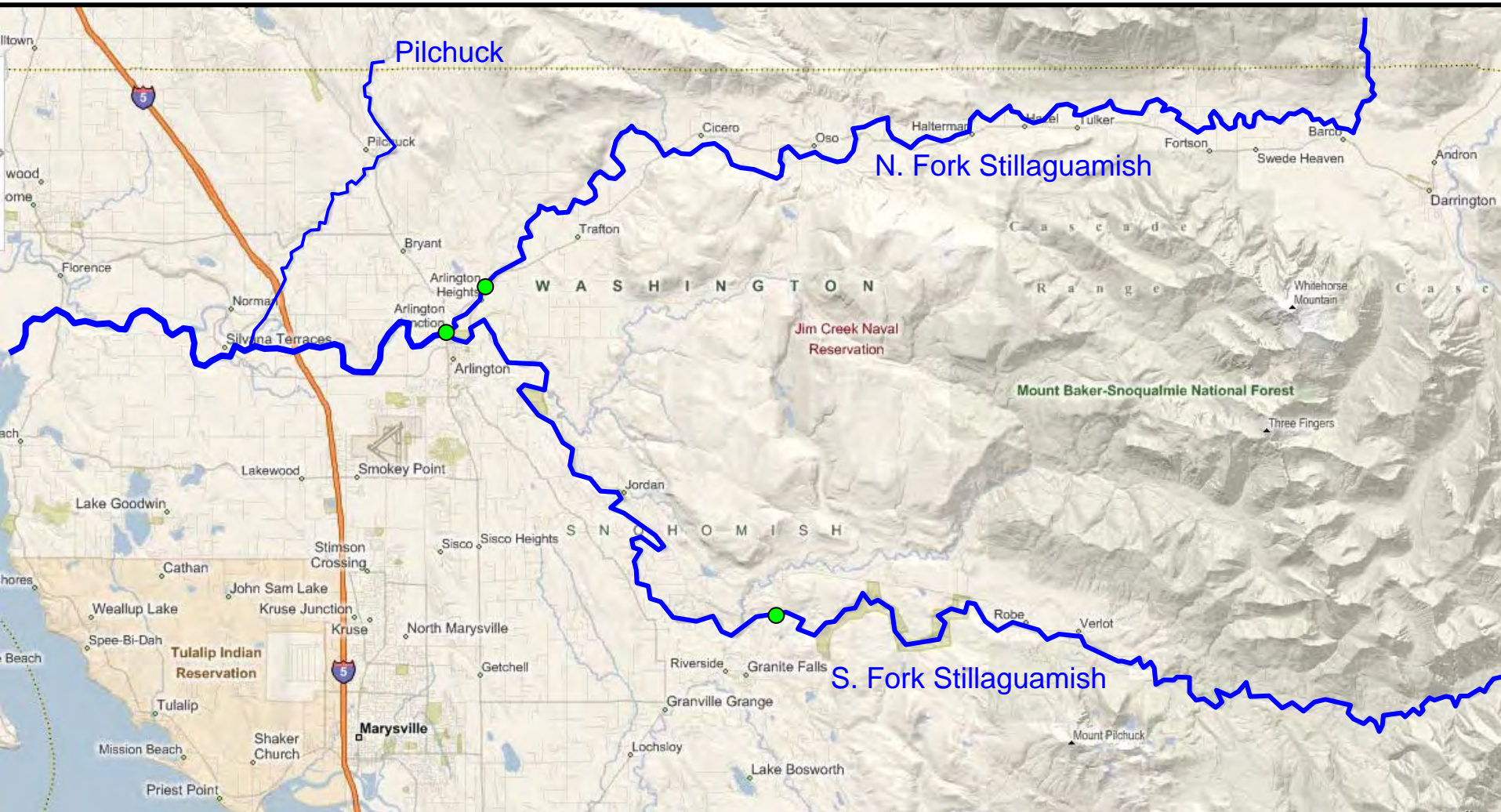




as of 07JAN09

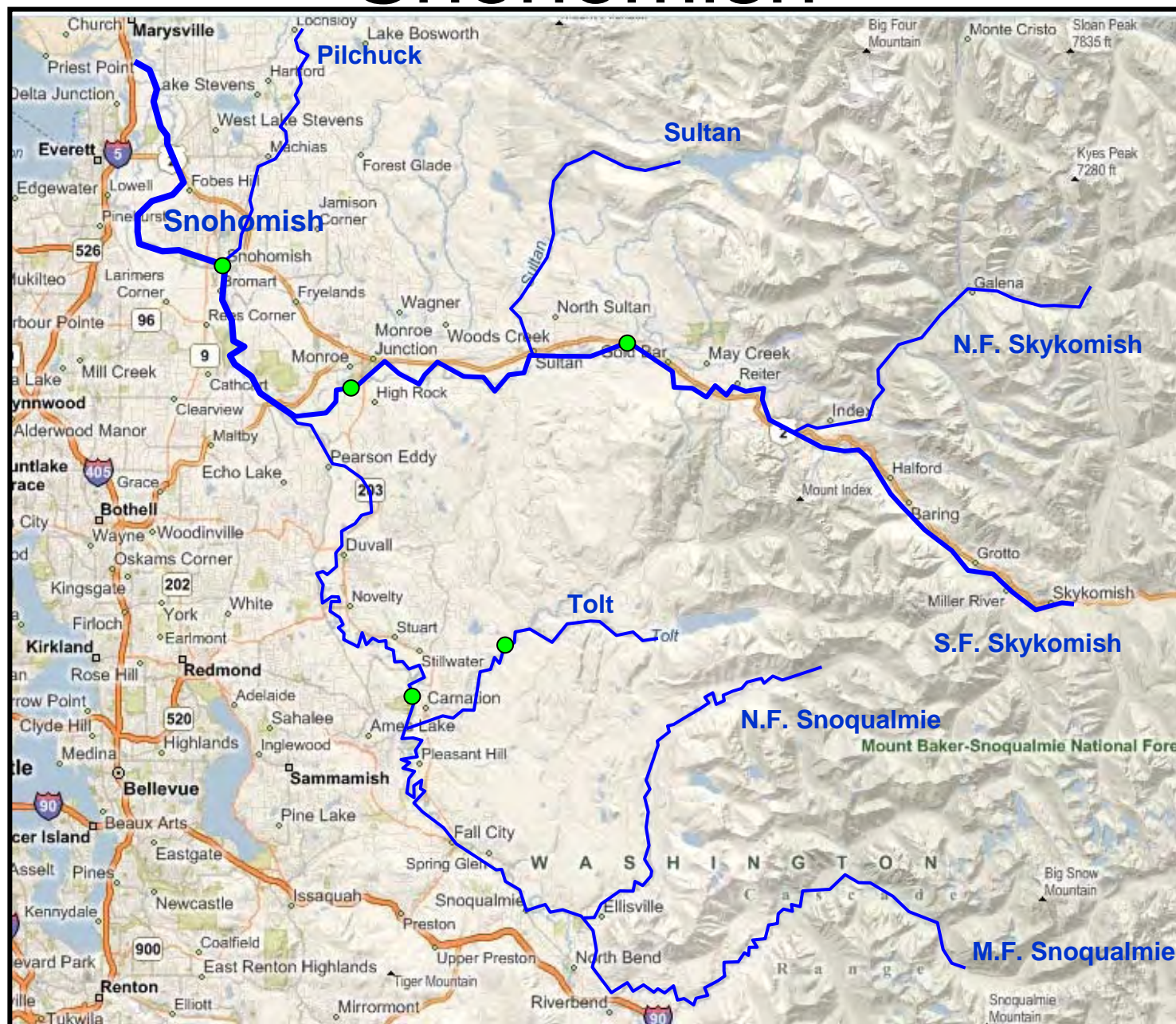
US Army Corps
Of Engineers
Seattle District

Stillaguamish River



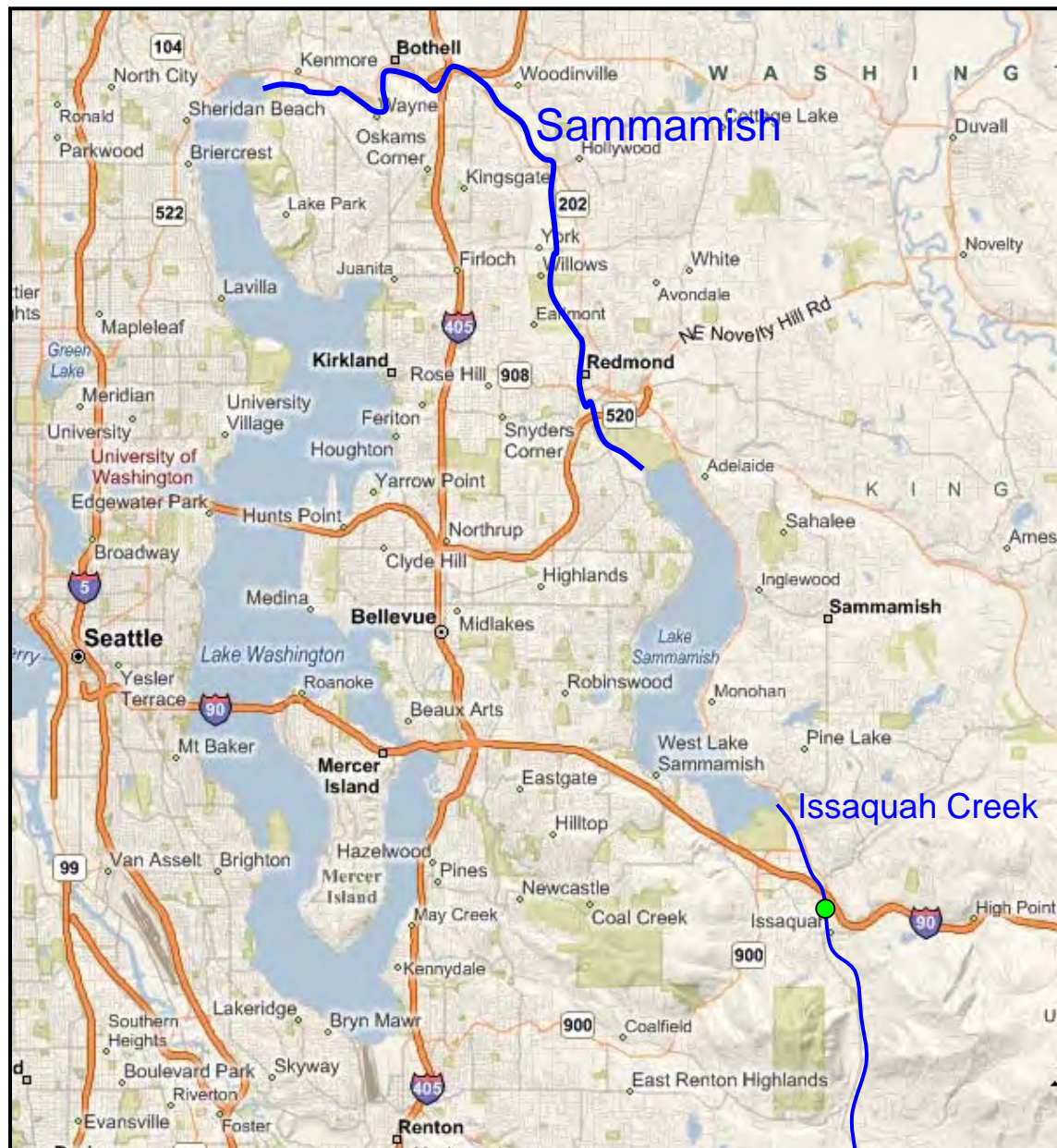


Snohomish





Sammamish River

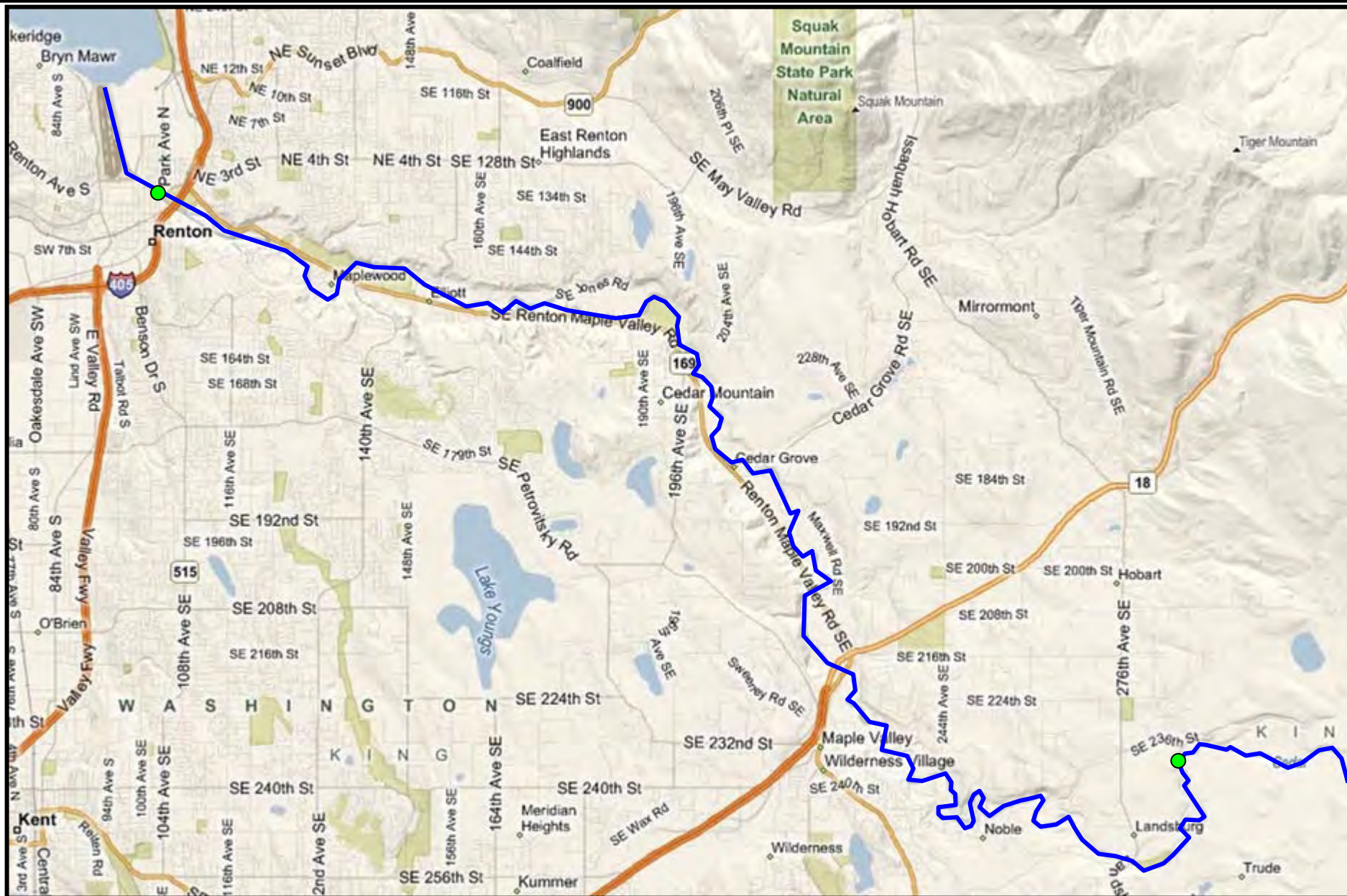




as of 07JAN09

US Army Corps
Of Engineers
Seattle District

Cedar River



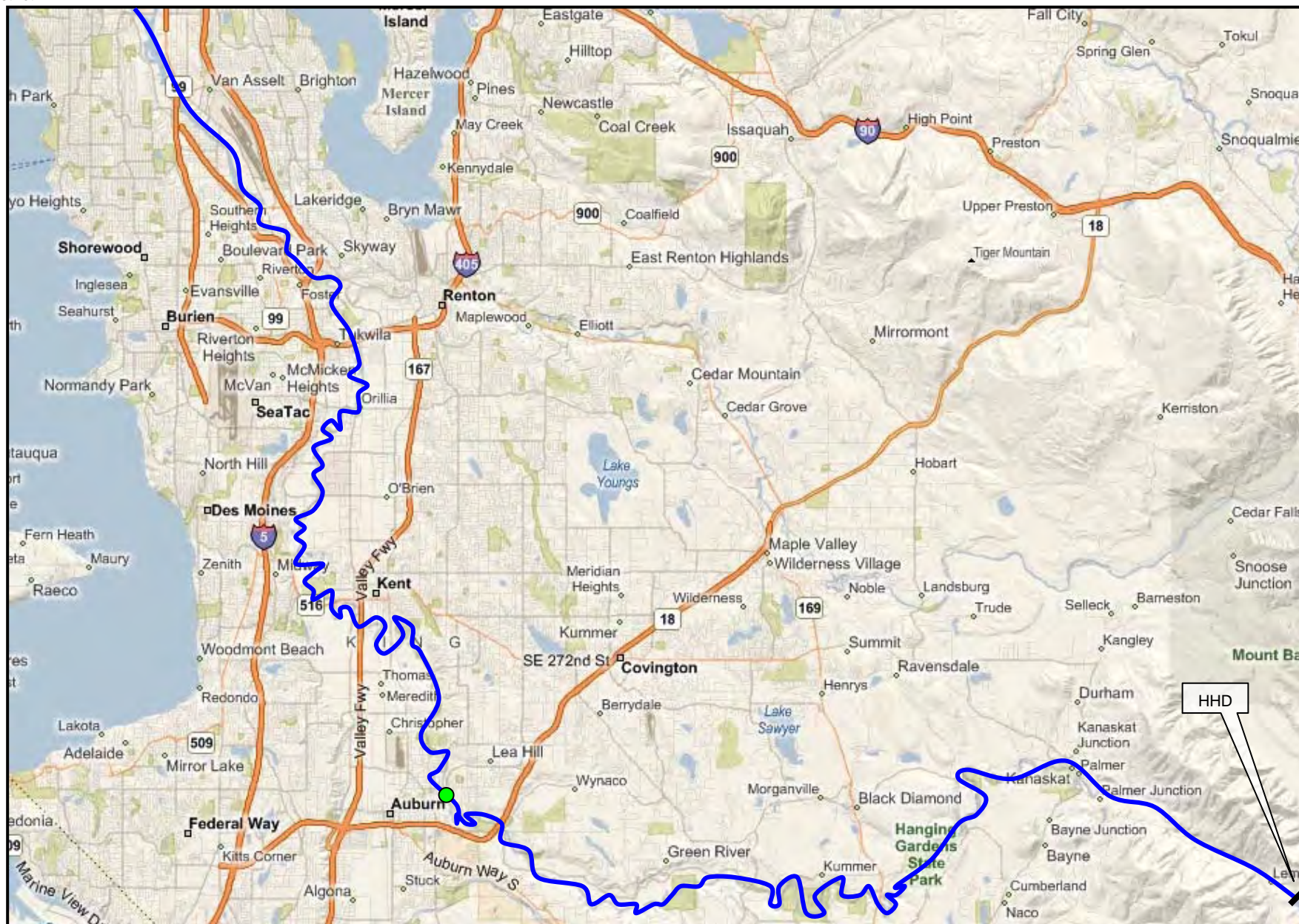
Respected For Public Service



as of 07JAN09

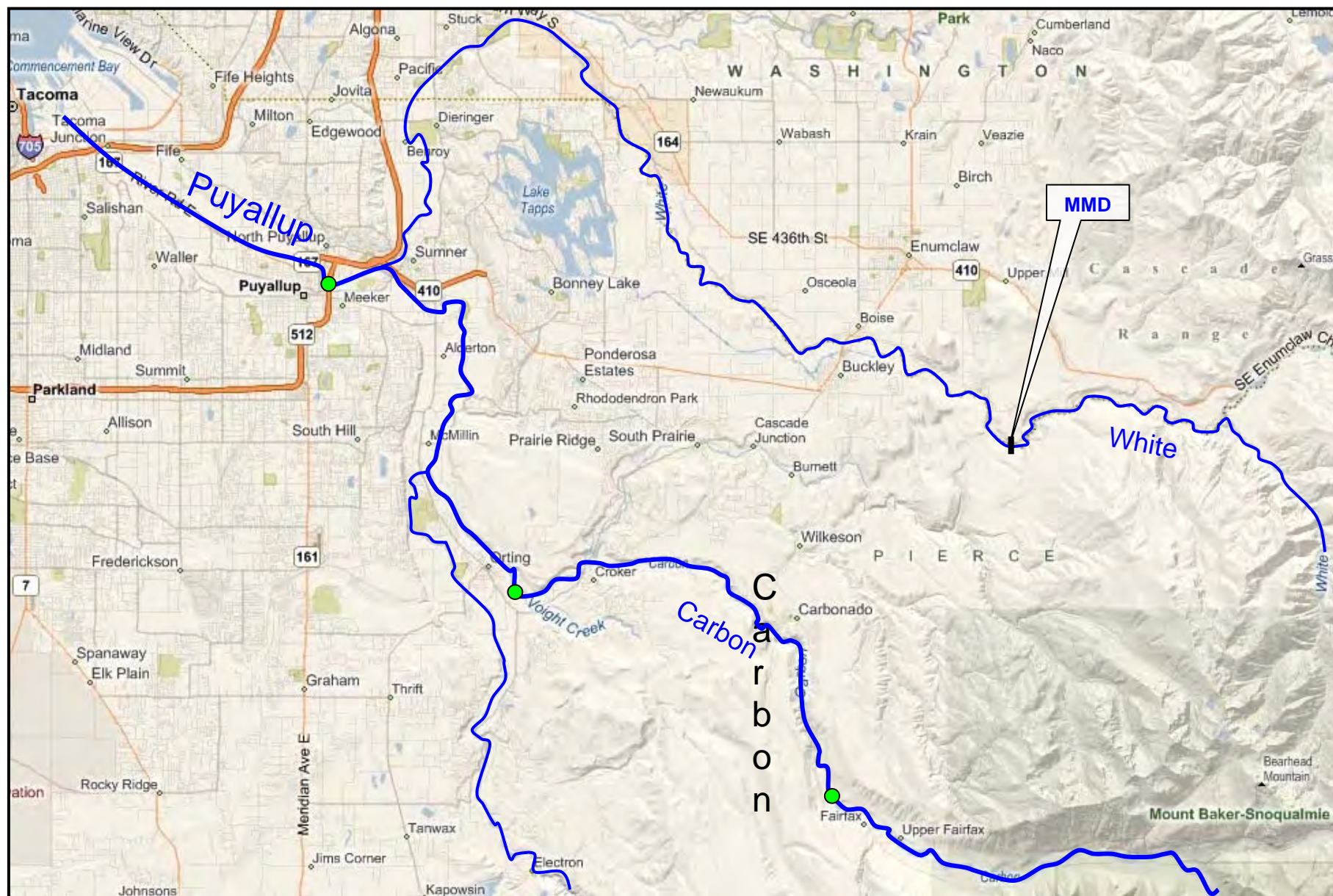
US Army Corps
Of Engineers
Seattle District

Green River



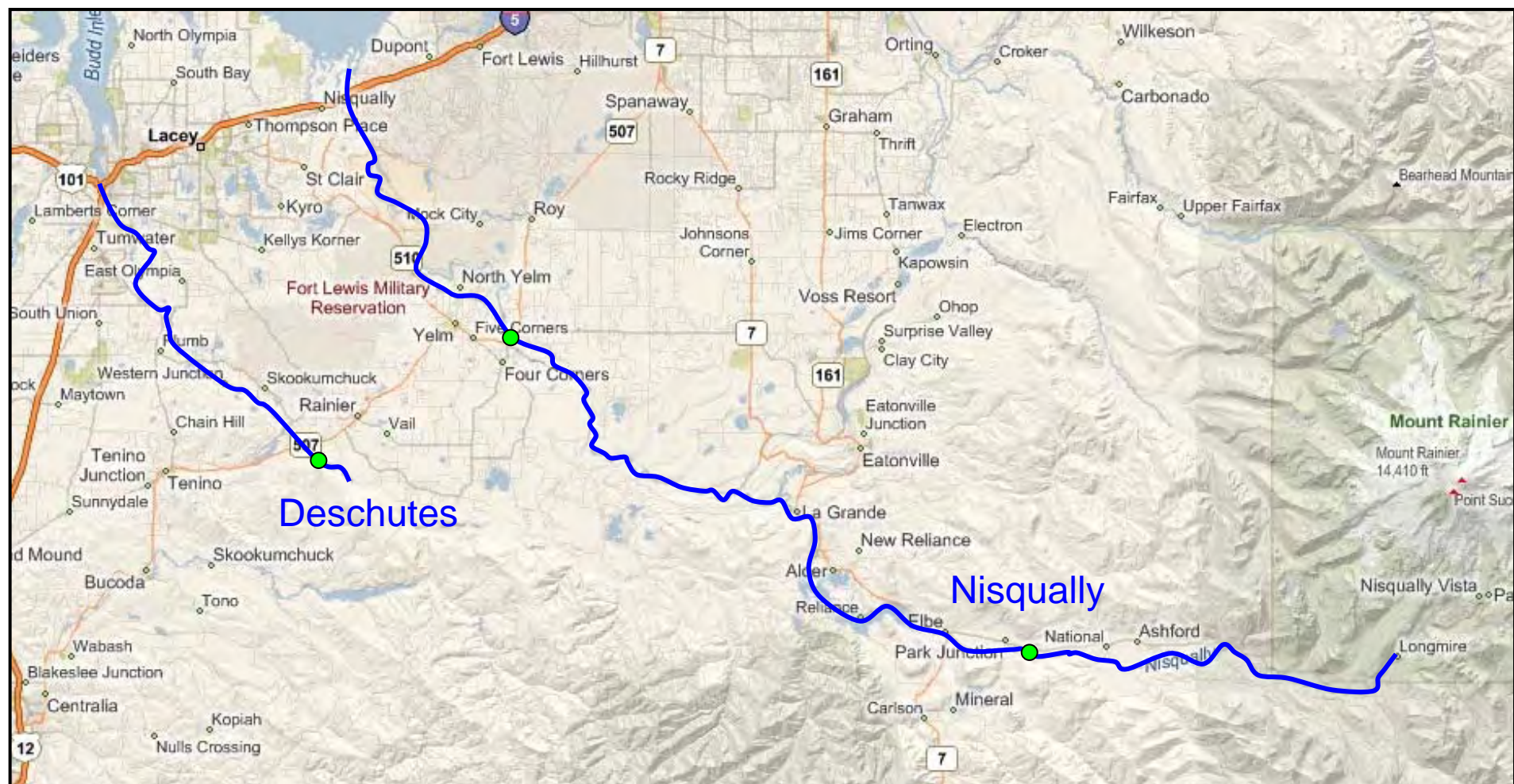


Puyallup



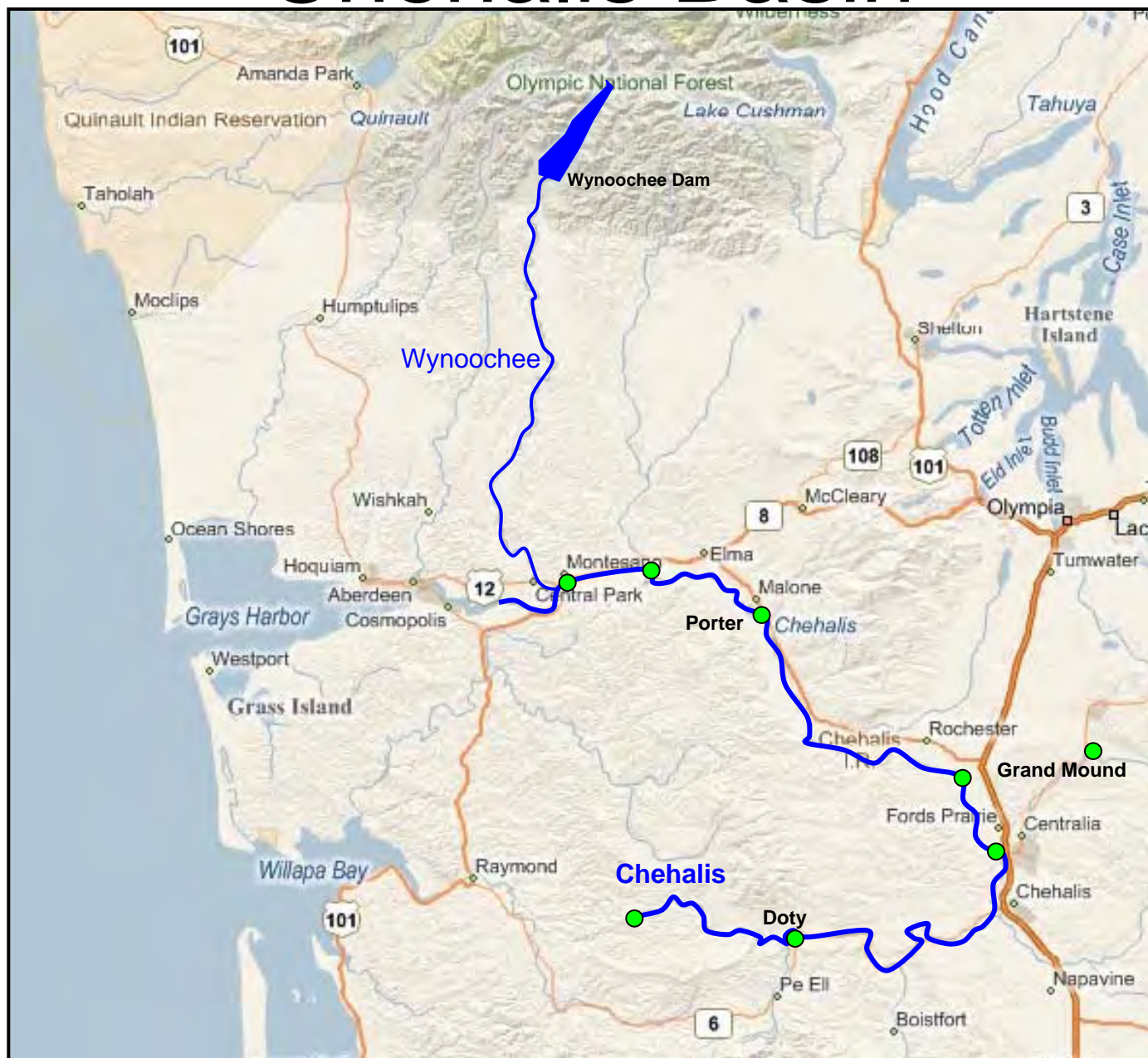


Nisqually / Deschutes





Chehalis Basin

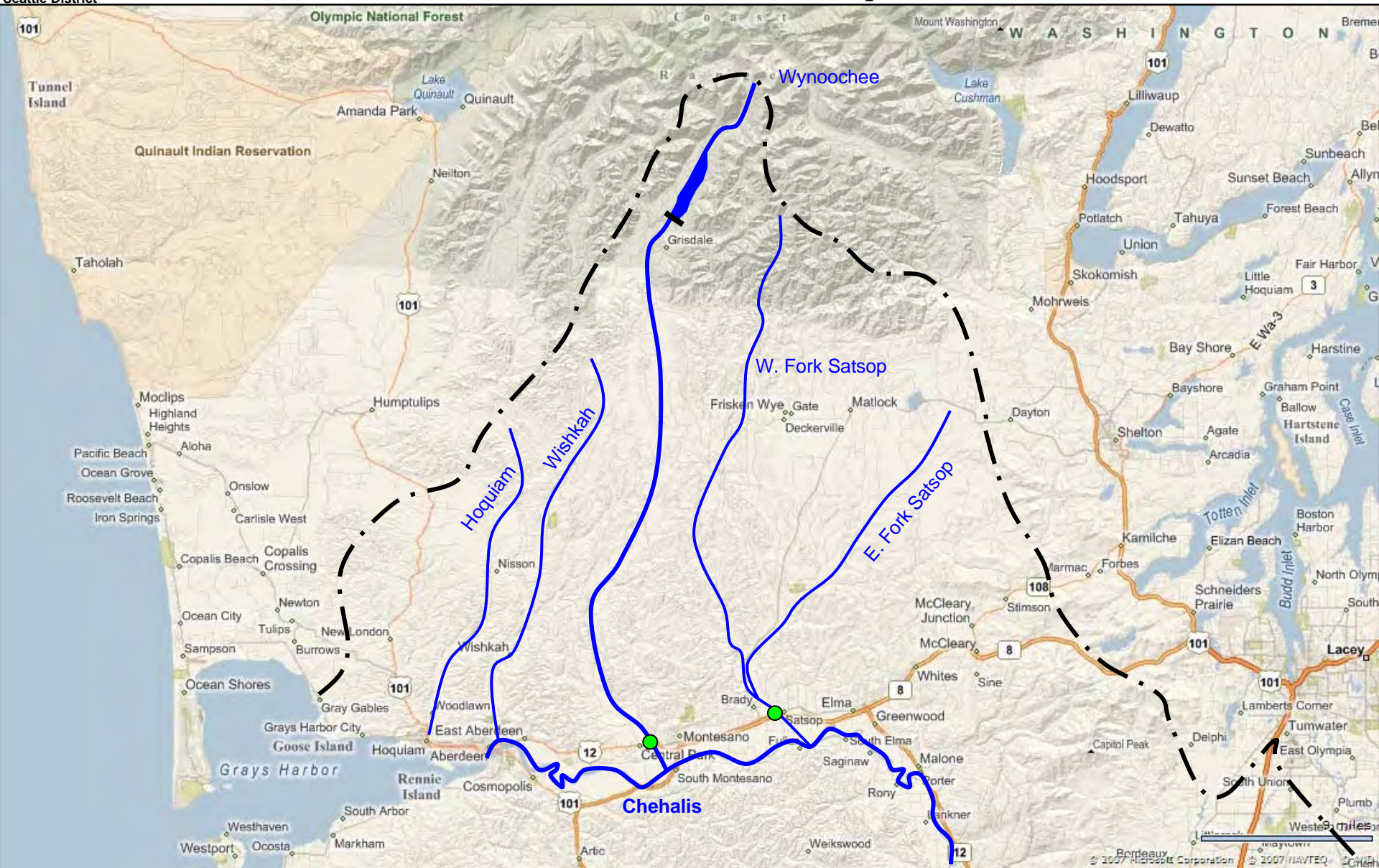




as of 07JAN09

US Army Corps
Of Engineers
Seattle District

Chehalis / Hoquiam



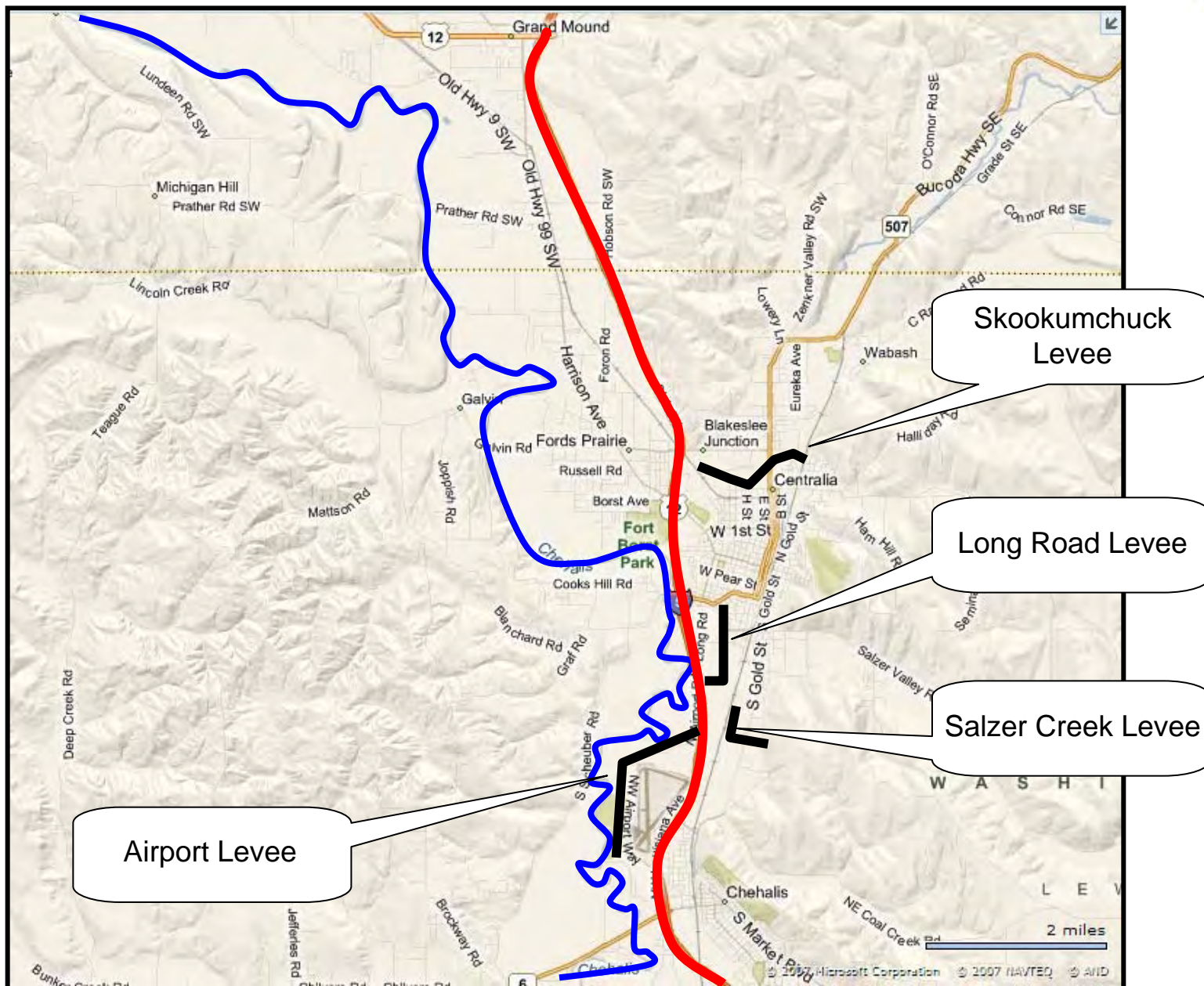
12 — — — Basin boundary

Respected For Public Service



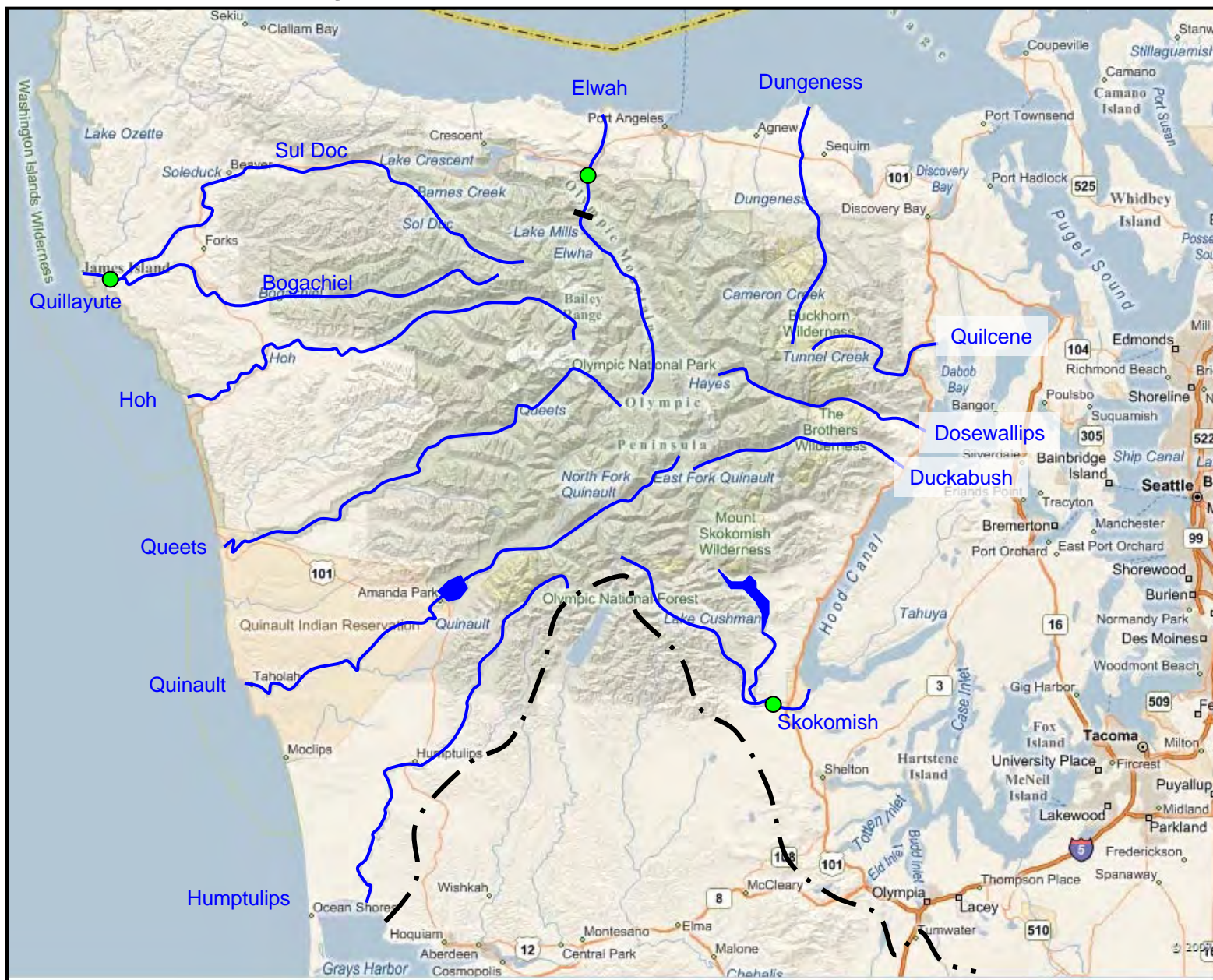


Centralia / Chehalis Detail



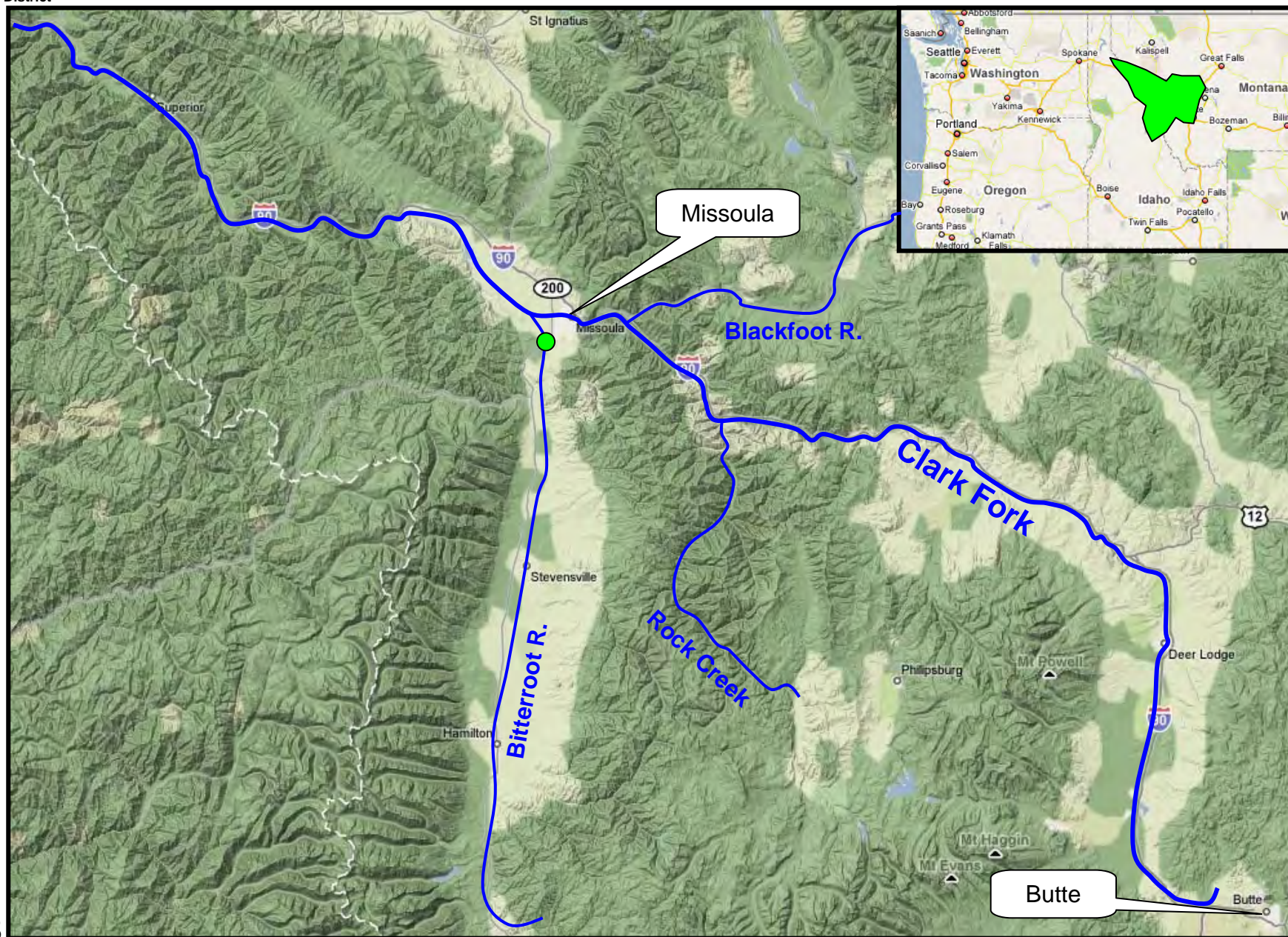


Olympic Peninsula





Upper Clark Fork





as of 07JAN09

US Army Corps
Of Engineers
Seattle District



Pend Oreille, Lower Clark Fork



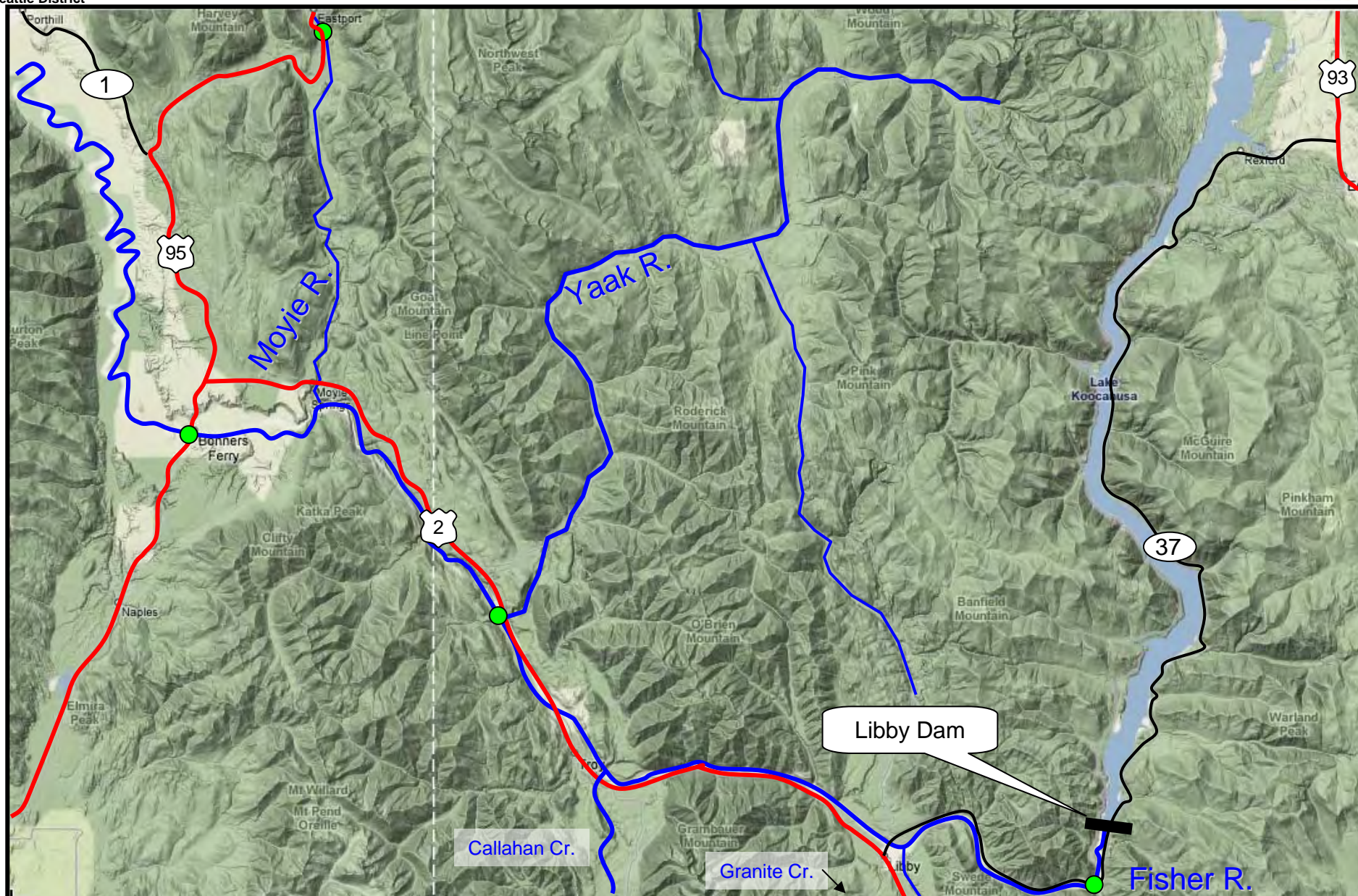


as of 07JAN09

US Army Corps
Of Engineers
Seattle District

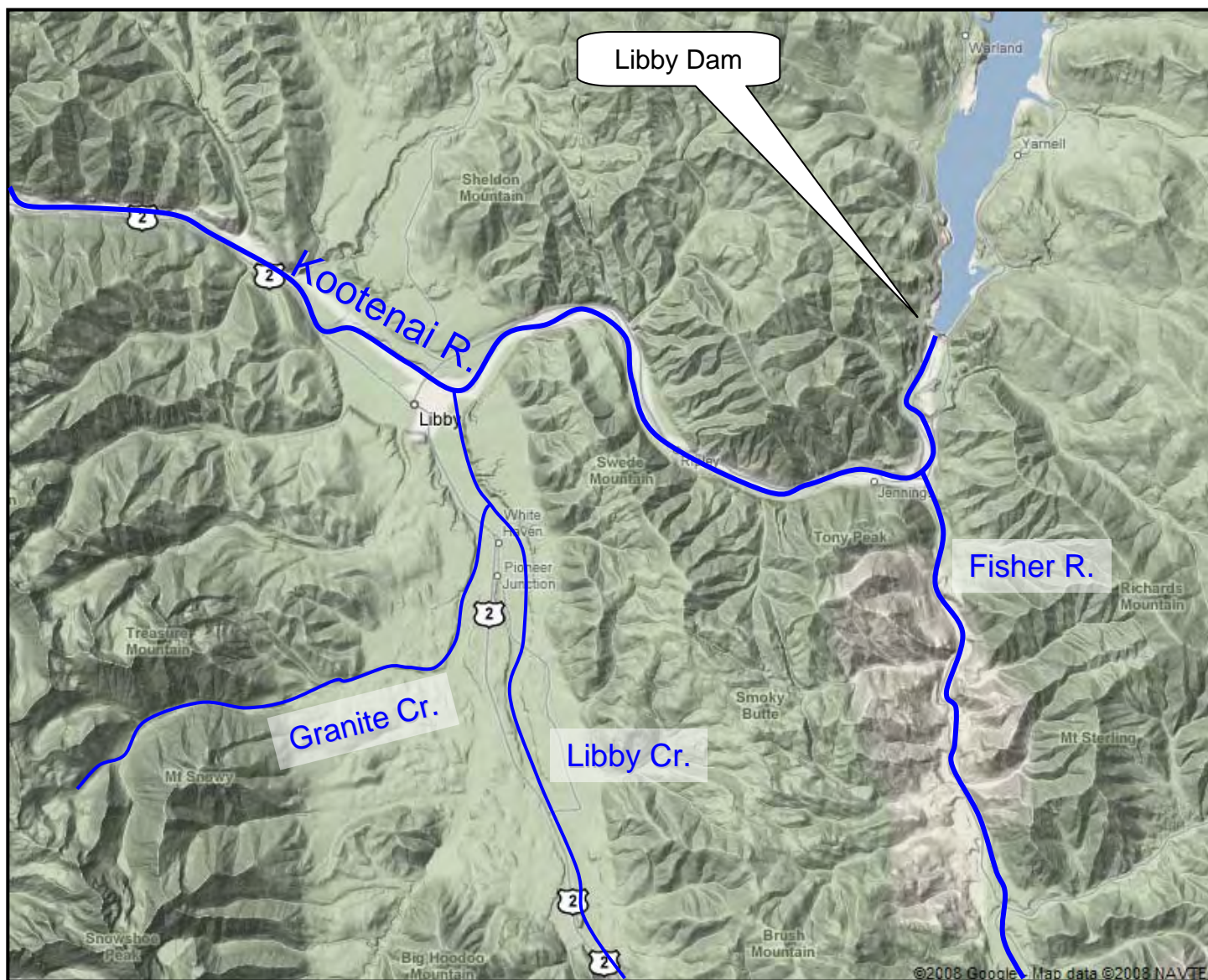


Kootenai



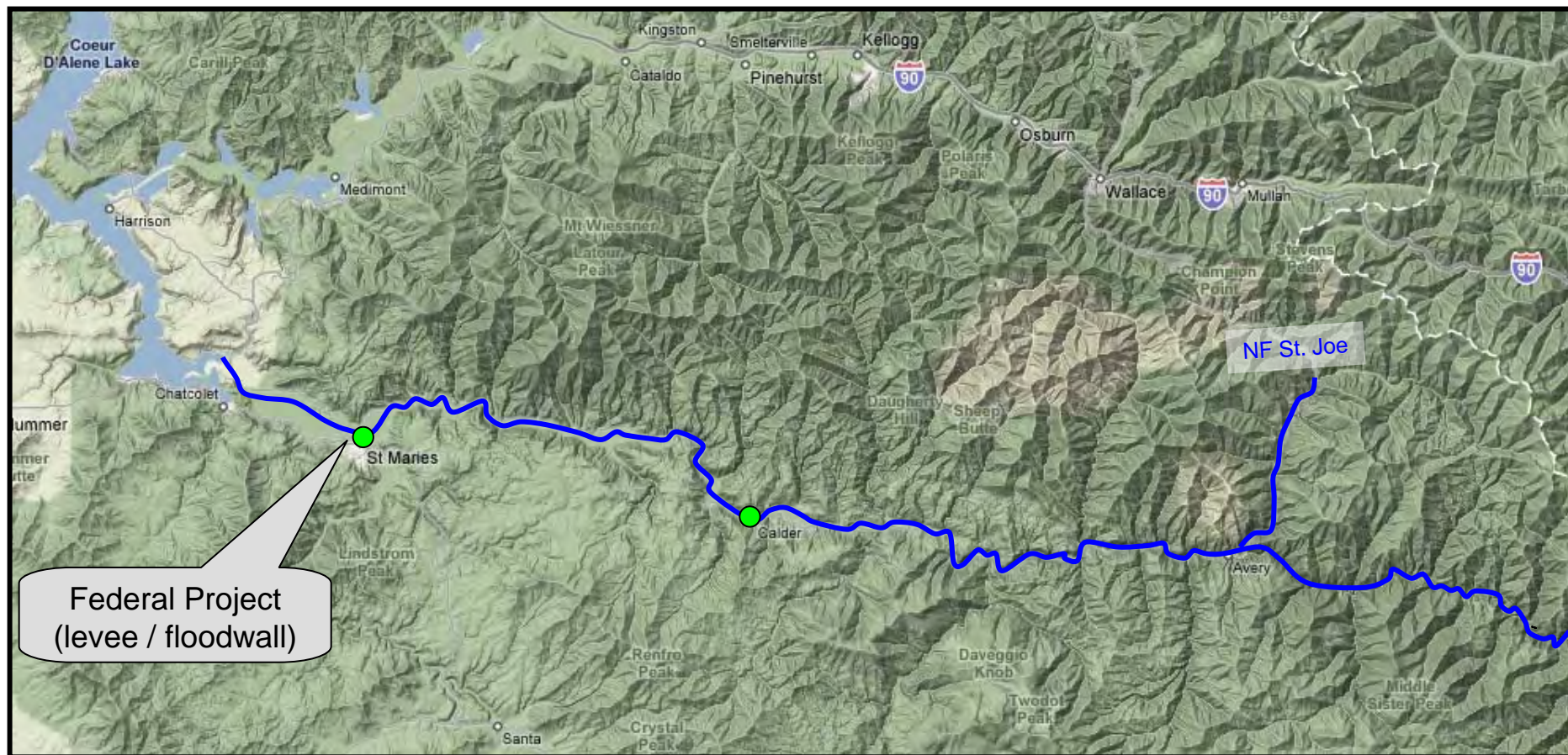


Libby, MT Detail





St. Joe



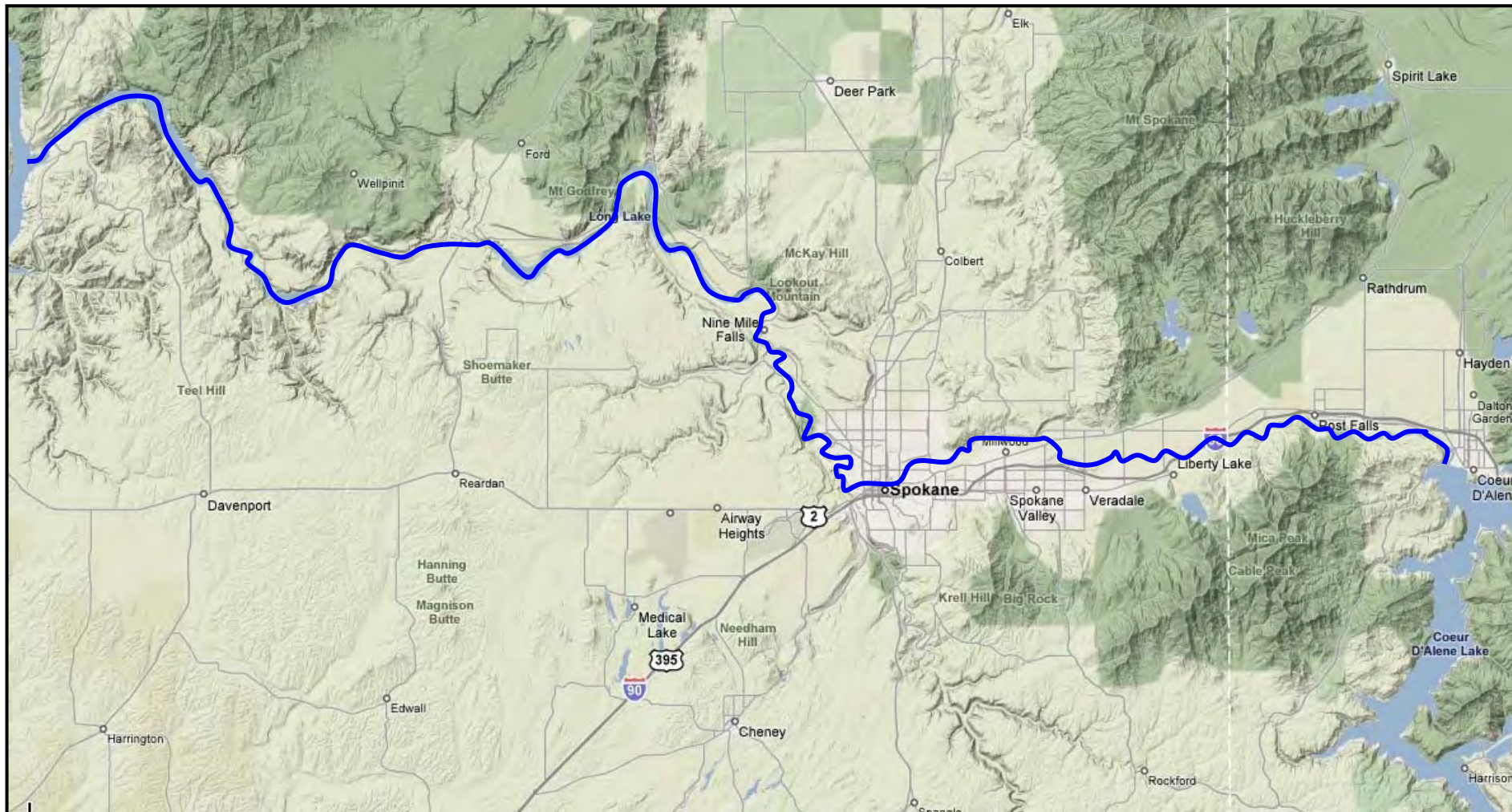


Coeur D'Alene





Spokane





Colville





Flathead

Stillwater R.

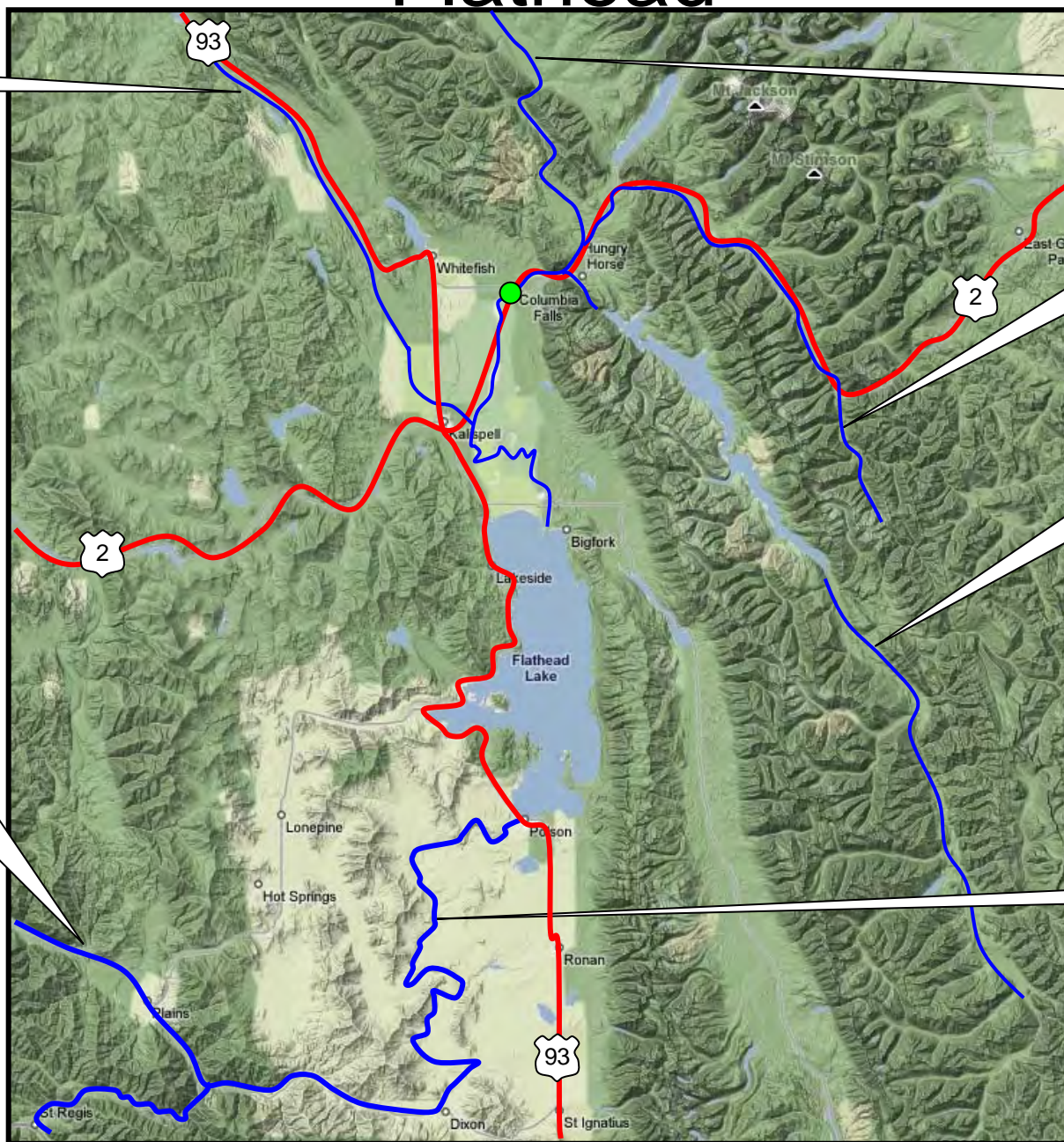
NF Flathead R.

MF Flathead R.

SF Flathead R.

Clark R.

Flathead R.





as of 07JAN09

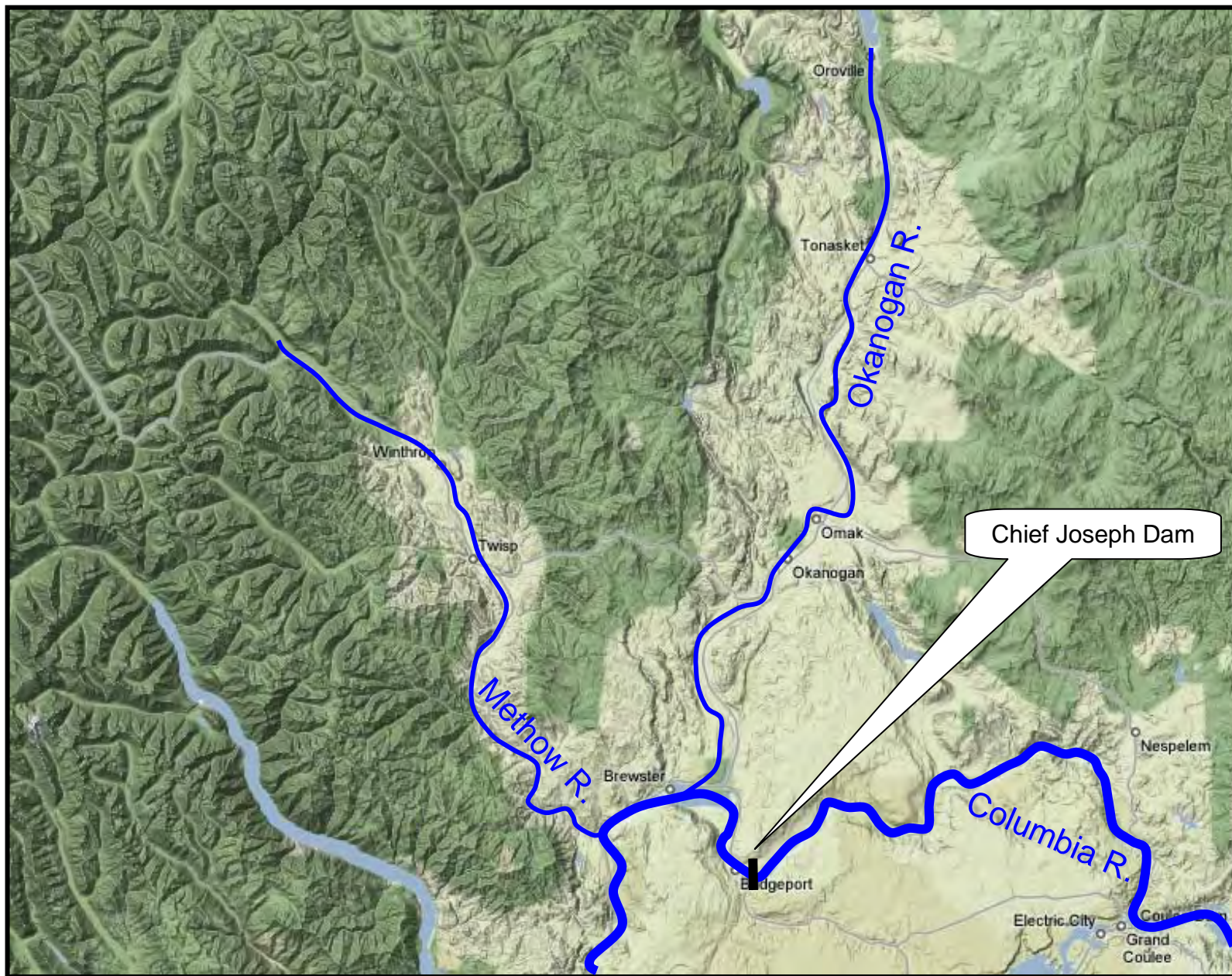
US Army Corps
Of Engineers
Seattle District

Wenatchee / Central WA



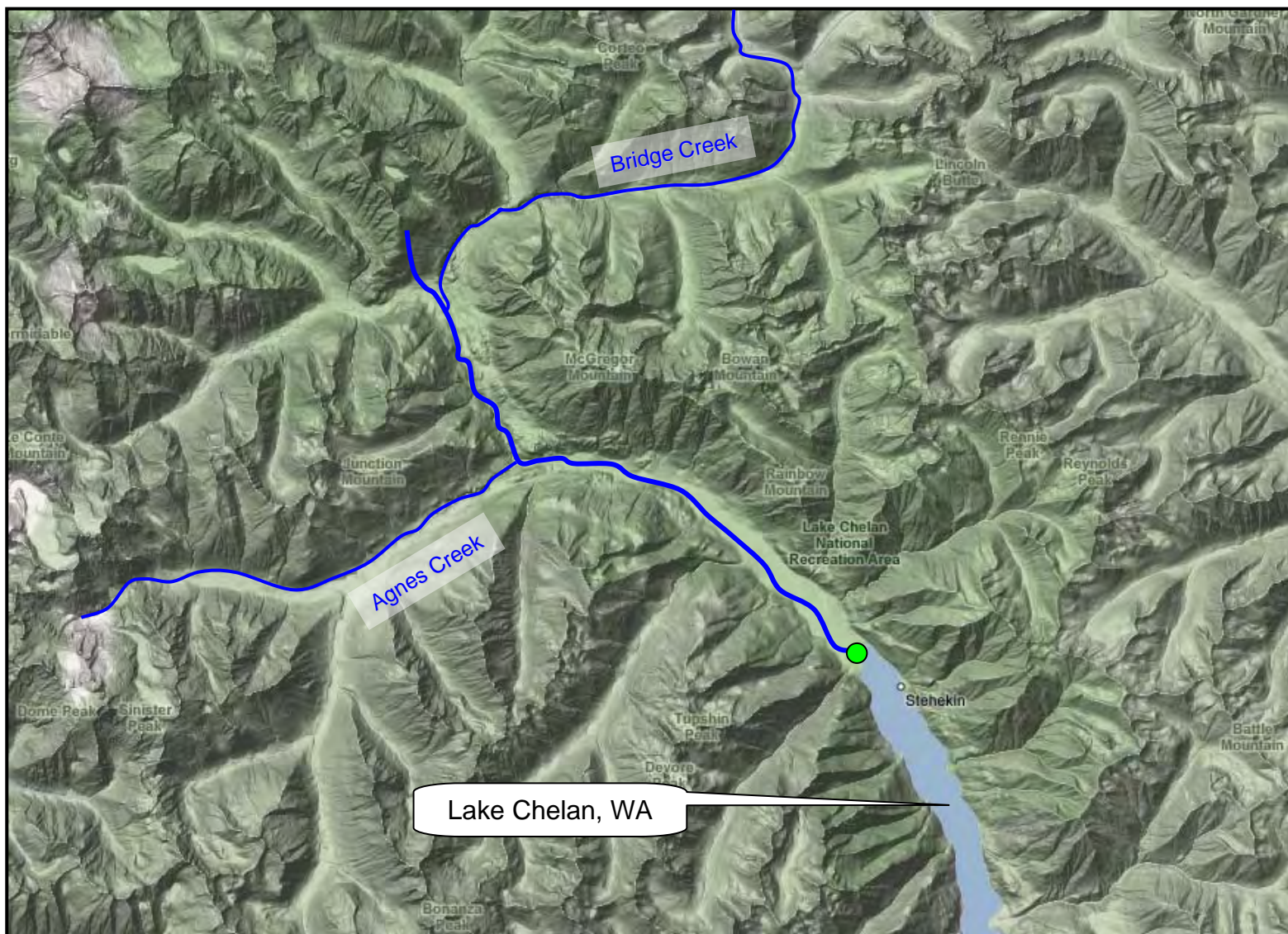


Okanogan & Methow





Stehekin River





as of 07JAN09

US Army Corps
Of Engineers
Seattle District



Yakima & Naches

